

THE CANYON

Stretching from the Central Atrium entrance down Concourse Avenue, the South Loading Dock provides plenty of casual picnic seating and ease of accessibility from all Concourse parking areas. Removable bollards can be installed to block off the street.



SOUTH LOADING DOCK

Stretching from the Central Atrium entrance down to Claybrook Pass, the South Loading Dock provides plenty of casual picnic seating and easy access from all Concourse parking areas.



CENTRAL ATRIUM

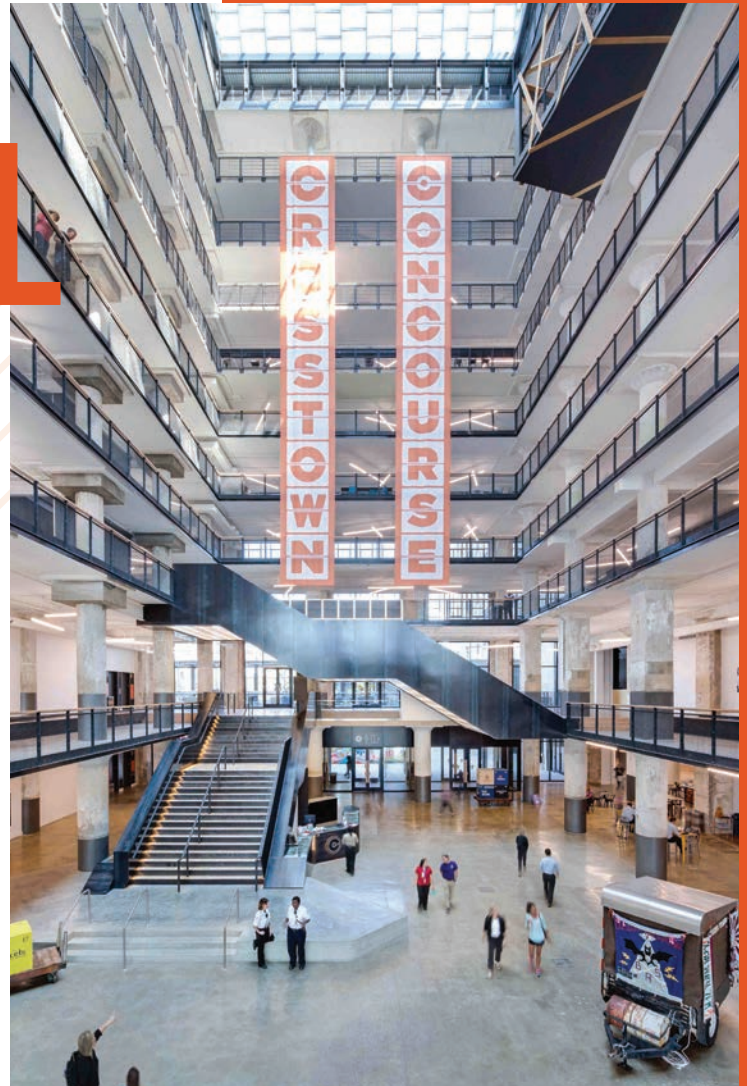
Considered the heart of Crosstown Concourse, the Central Atrium is the building's largest space and can accommodate a variety of events.

Central Atrium Ground Floor

Home to five active food retailers, the ground floor of the Central Atrium is a lively public space featuring show-stopping architecture and sprawling square footage for both public and private events.

Exterior Balcony

Located off the second floor of the Central Atrium, the Exterior Balcony is an intimate outdoor space that overlooks the Crosstown Theater and the North Plaza.

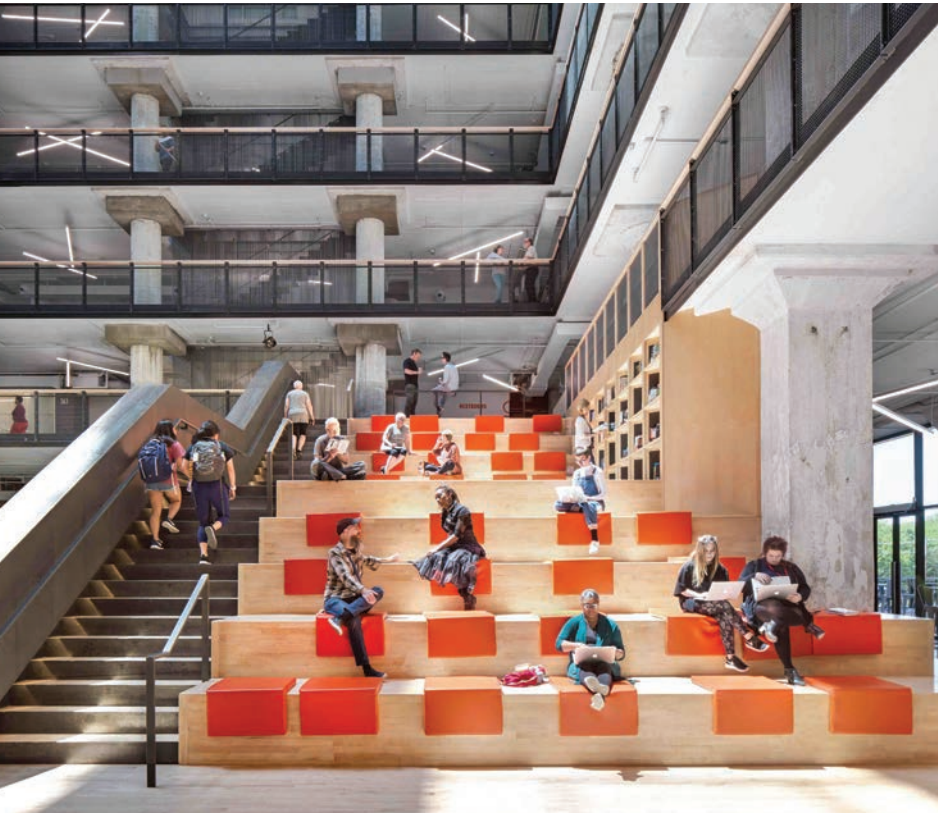




CENTRAL ATRIUM

Level 2

The second level of the Central Atrium is home to FocalPoint and Crosstown Arts and offers soaring ceilings, as well as a bird's eye view of the bustling ground floor.



Big Stairs

This unique architectural feature stretches between the second and third floors of the Central Atrium and acts as an indoor amphitheater for presentations, performances, and film screenings.

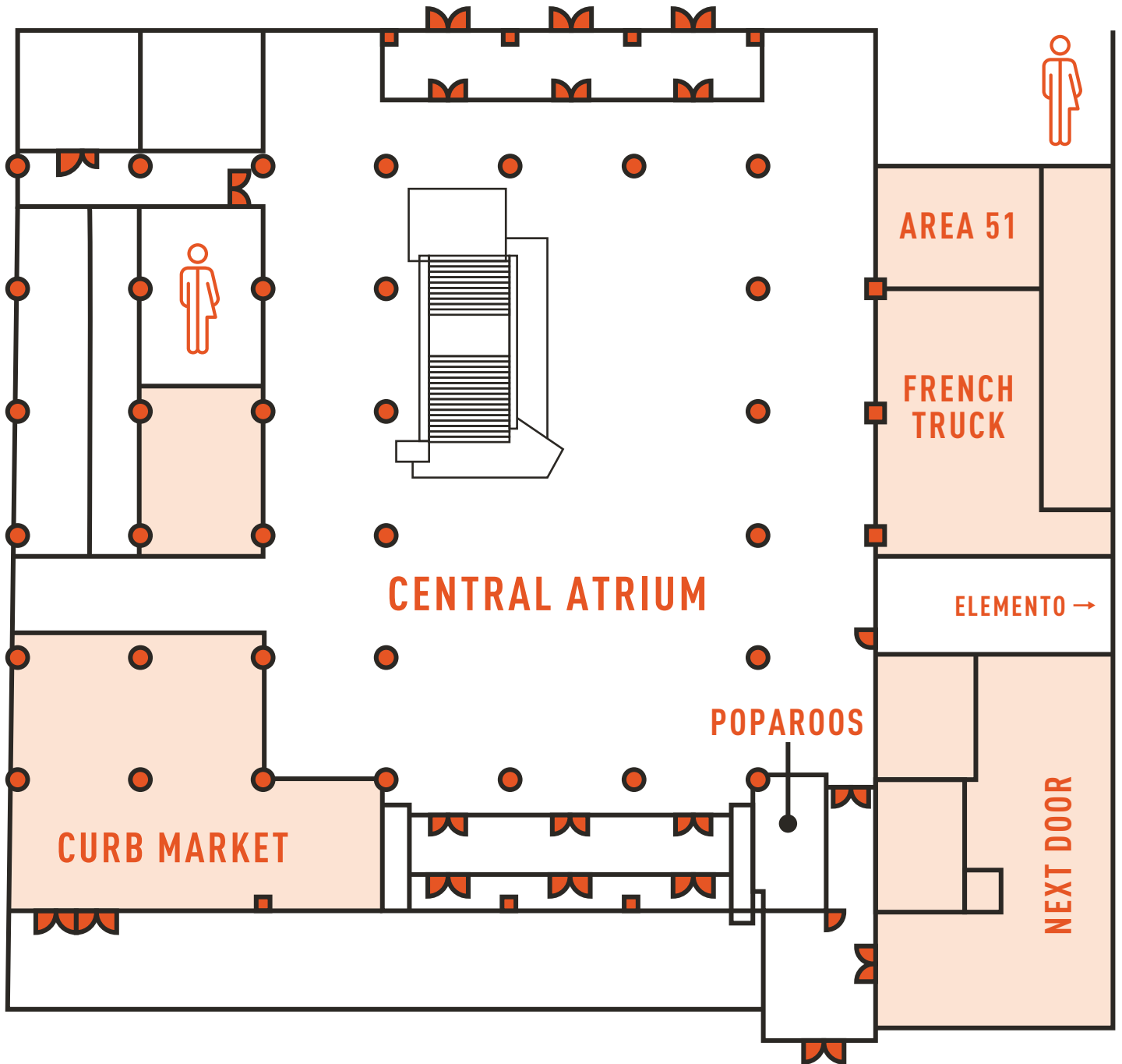
Level 3

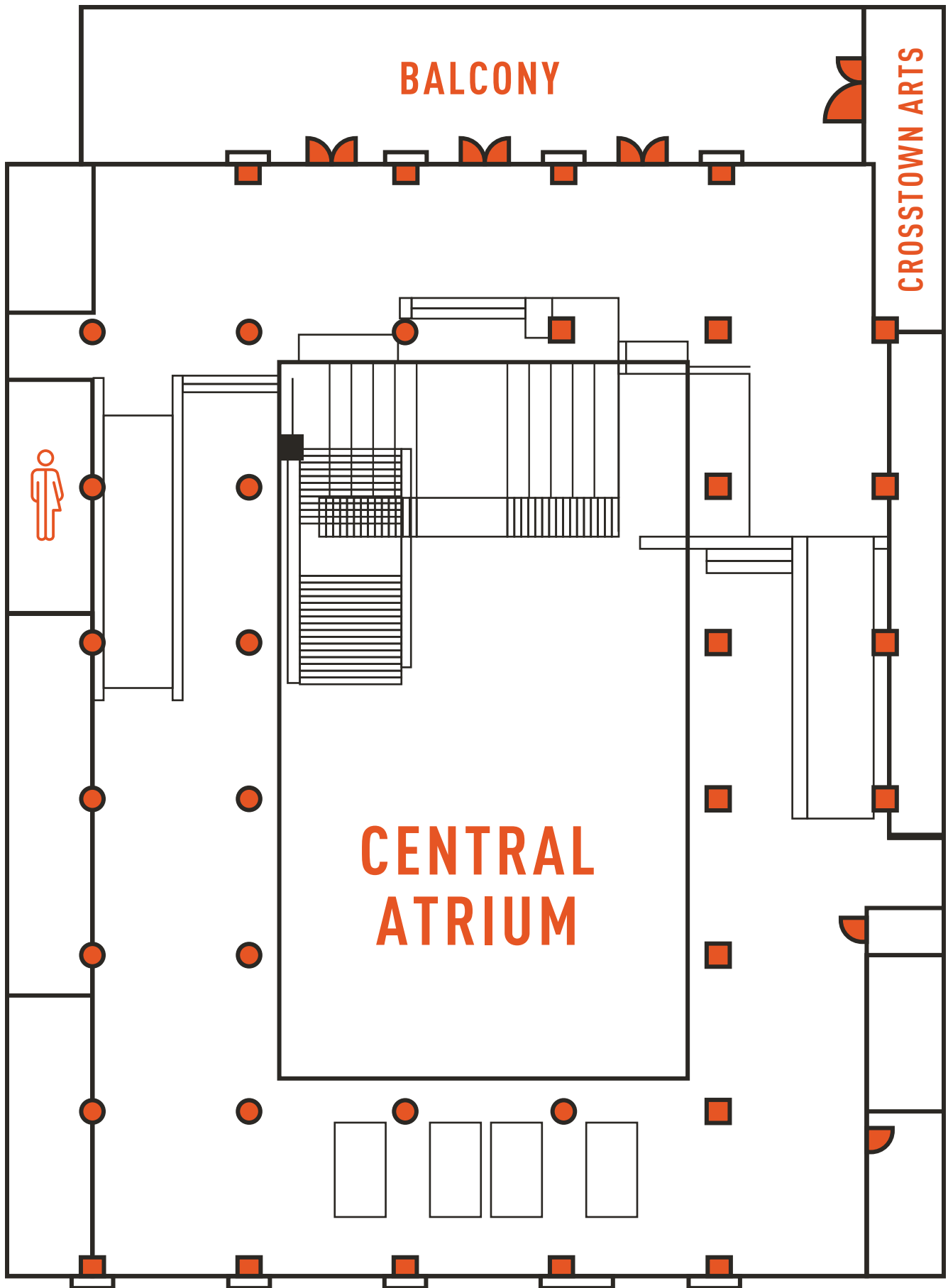
The third floor of the Central Atrium is the entrance to a diverse range of tenants and features relaxed decor, including a working pinball machine.

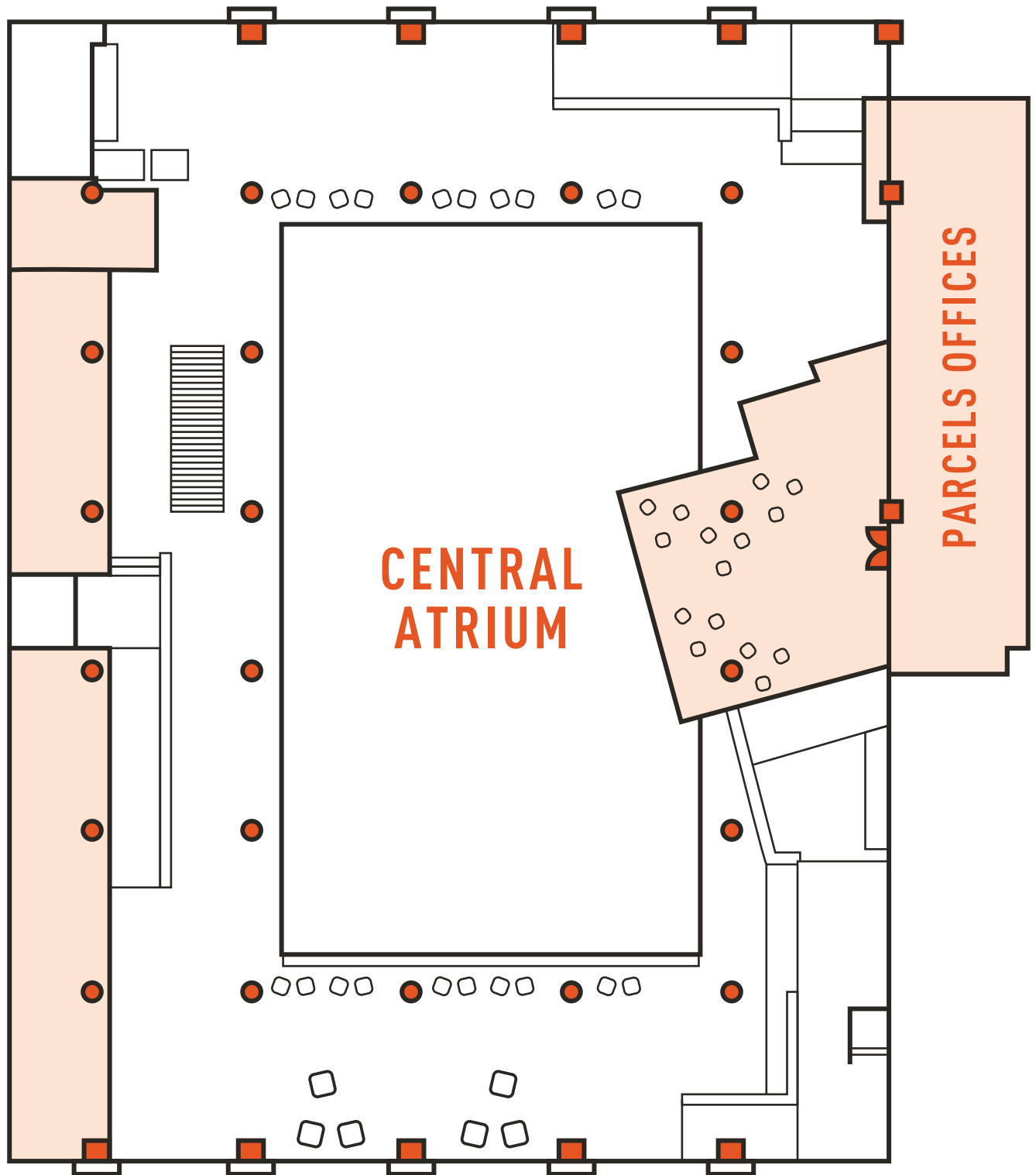


Level 7

The seventh floor of the Central Atrium doubles as the “front porch” for Parcels, the residential arm of Concourse, and provides a more private setting for small gatherings.







EAST ATRIUM

The first level of the East Atrium is Concourse's most intimate open atrium space. It is home to Farm Burger, Suntrust Financial Confidence Center, and Shared Art Making, as well as a collection of photographs and historical artifacts from the Sears Crosstown building.

Glass Room

Tucked behind the red staircase, the Crosstown Arts Glass Room provides the perfect amount of space for meetings or temporary office space and comes equipped with a projector and 6-foot tables.





CROSTOWN ARTS

The East Atrium — home to Crosstown Arts — sits in the original 1927 Sears Roebuck and Co. Building and houses Concourse's iconic red spiral staircase.



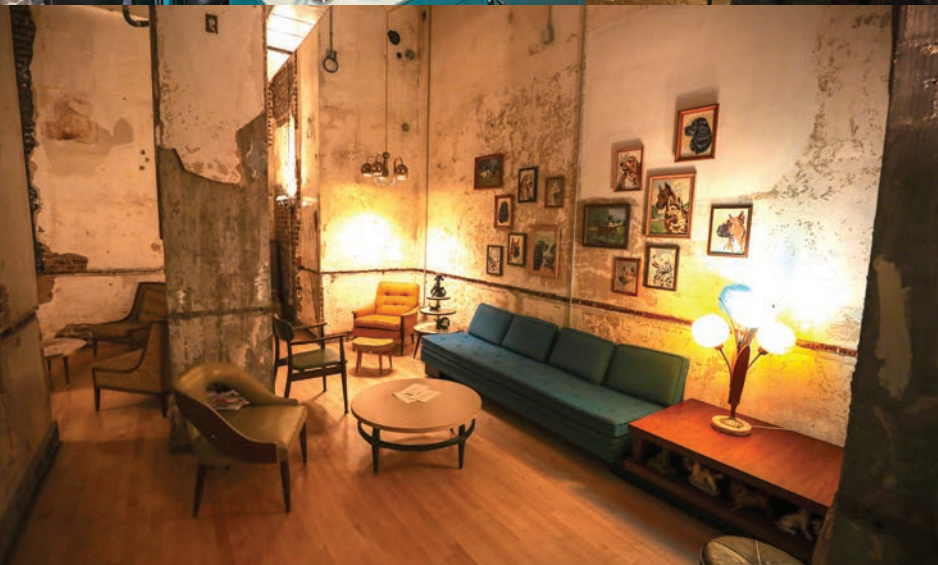
Crosstown Arts

The second level of the East Atrium is Crosstown Arts — Concourse's public art gallery space, which offers a variety of exhibits, film screenings, and performances throughout the year, providing an eclectic backdrop for any occasion.



The cafe at Crosstown Arts

The cafe offers delicious, healthy, and creatively prepared plant-based meals for breakfast, lunch, and dinner. Pastries and coffee drinks, as well as beer and wine, are available throughout the day.



Art Bar

Art Bar at Crosstown Arts is a full-service bar serving a curated list of wines and craft beers and a menu of artful, cutting-edge cocktails. The cocktail menu features drinks made with local, fresh, and foraged ingredients from Memphis and around the world.



CROSSTOWN ARTS

The Green Room

Created specifically as an intimate music performance space, The Green Room is tucked away from the East Atrium gallery, making it ideal for mid-sized private events.

East & West Galleries

Each of these contemporary art galleries offers a clean canvas that allows for more personalized or streamlined events.



The Green Room



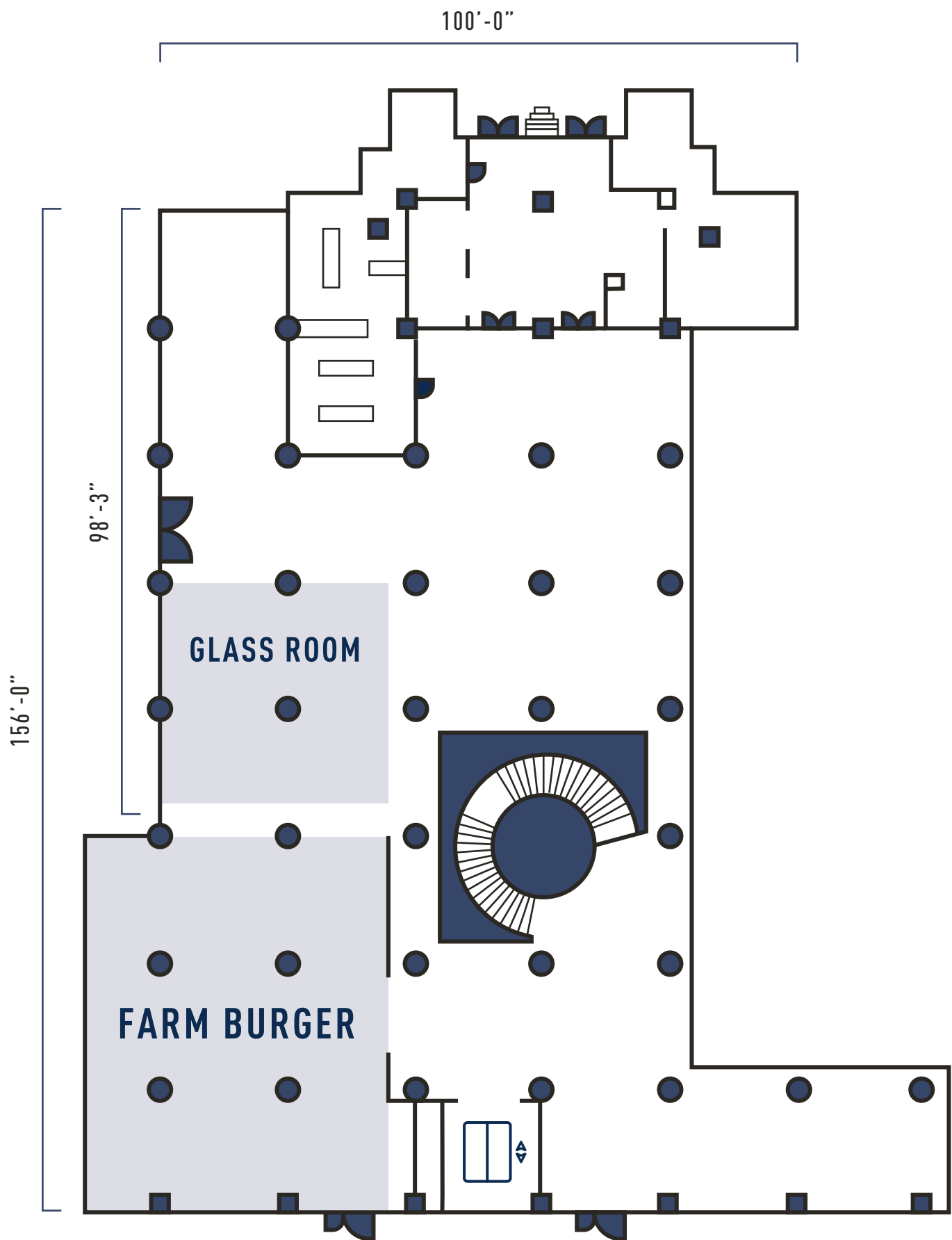
East Atrium



East Gallery



West Gallery



156'-0"

CROSSTOWN ARTS OFFICES

116'-0"

GREEN ROOM

THE CAFE

ART
BAR

CENTRAL
ATRIUM

SCREENING ROOM

WEST GALLERY

EAST GALLERY

160'-0"

CROSTOWN THEATER

A state-of-the-art venue for live music, film, youth theater, private meetings, and conferences, Crosstown Theater features modular flooring and telescopic seating. Its design offers scalability for nearly any event that requires flat floor and theater-style seating.



NORTH PLAZA

Located just beyond the north entrances of the Central and West Atria, the North Plaza offers a unique setting bordered on three sides by the theater, Concourse building, and exterior balcony.

SOUTH PLAZA

Known as the “front porch” of Crosstown Concourse, the South Plaza offers thousands of square feet of outdoor space and is equipped with canopies, industrial fans, water features, games, seating, and elevated green space.

